

TECHNO TOY TUNING
ZREC-REAR MICRO BIG BRAKE KIT
INSTALLATION INSTRUCTIONS

PACKING LIST:

- 2) Wilwood Calipers
- 2) Caliper Brackets
- 2) Micro BBK Shims
- 2) Brake Rotors
- 2) Stainless Brake Lines
- 1) Box Wilwood Brake Pads
- 1) Hardware Pack

HARDWARE KIT CONTENTS:

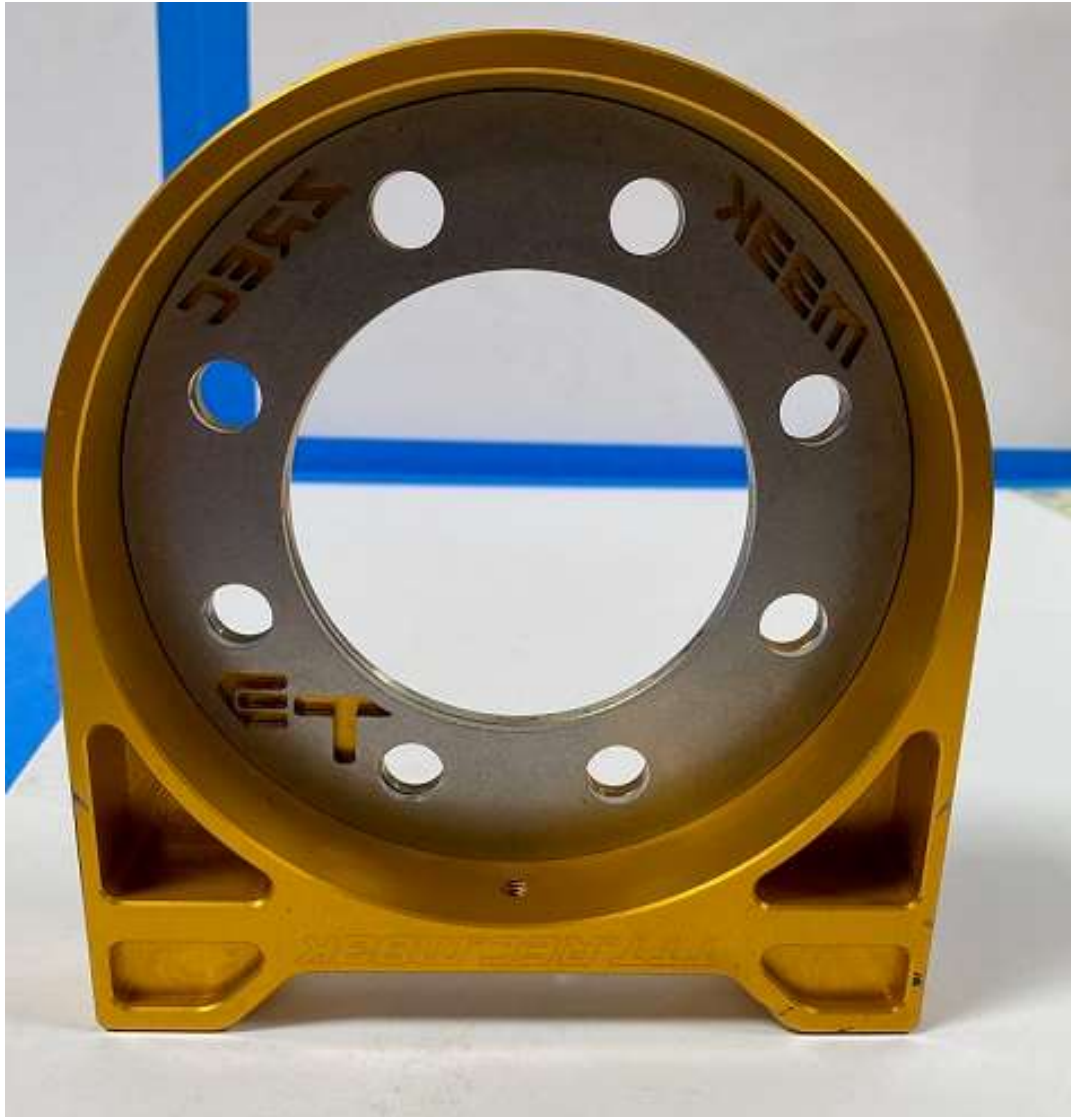
- 4) 3/8-24x2 Socket Head bolts
- 2) Rotor alignment rings

(The 8 Bolts (12-1.25x40 Hex Head bolts and Lock Washers) are included in the **BACKING PLATE HARDWARE PACK.**)



Once you have bolted the backing plate into the car and have it in the correct spot you want you are ready to install the brake kit

(Photo shown above)

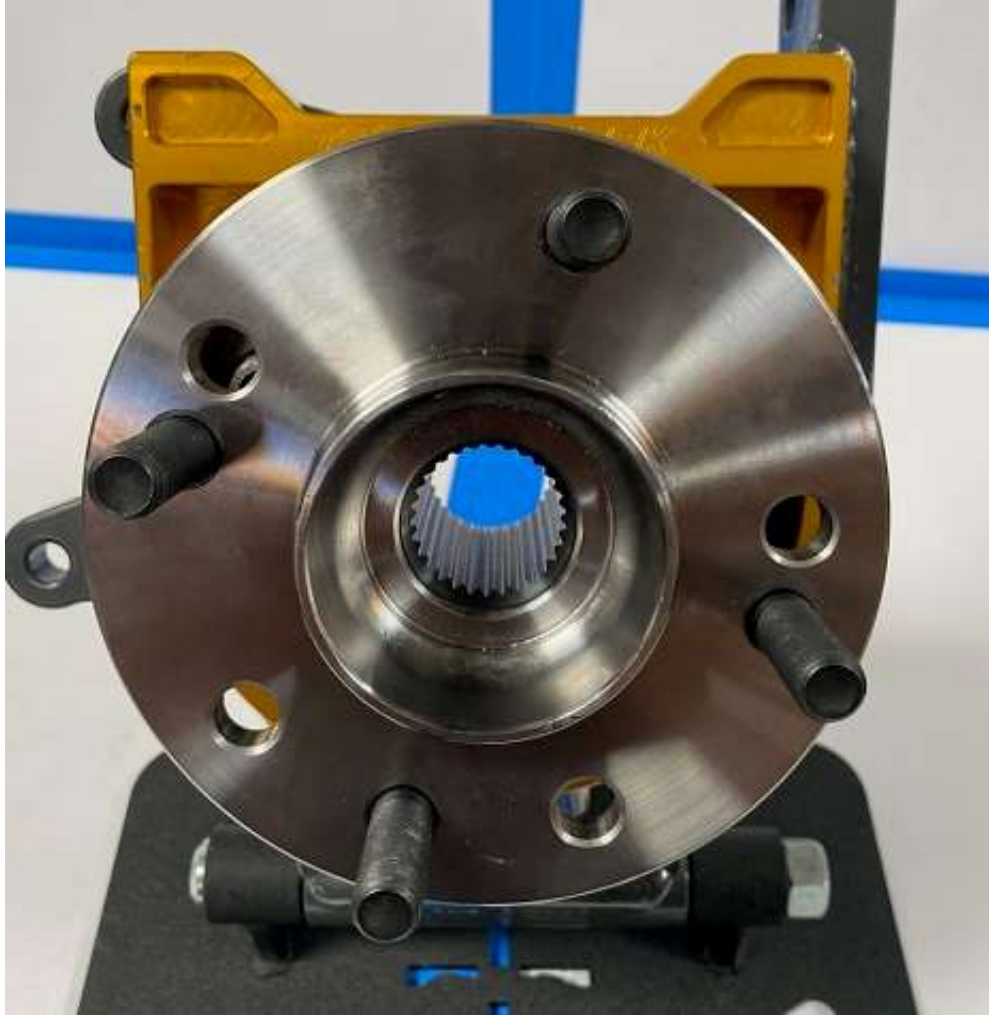


Before installing the Hub you will need to align the stainless steel shim inside the bracket as shown above

(MRBBK stainless shim)



Install the Hub into the Bracket as shown above.



Once you have the bracket and hub bolt hole lined up you are ready to bolt the hub and bracket up to the backing plate.

(If running e-brake function, make sure you mount the bracket in the 12 o'clock position)



Use the 4 12-1.25x40 bolts and lock washers in the backing plate hardware pack to bolt the hub and bracket to the backing plate as shown above.

(Torque to 45ft/lbs.)



Install Rotor alignment ring into rotor as shown above. Once the ring is installed slide the rotor over the studs.



Should look like this once all together.



Place caliper onto bracket using the two 3/8-24x2 socket head bolts.

Final torque 30ft/lbs.

Remove the retainer from the caliper, install the pads and re-install the retainer. Install elbow fittings into the caliper (2-3 turns past hand tight), install brake lines and orient correctly so they do not rub or get pinched. Repeat procedure on opposite side and bleed brakes. Clean well and double check for firm pedal and no leaks. Install wheels and you are ready to go!

***WE HOPE YOU ENJOY THE
PERFORMANCE AND AESTHETICS OF***

***YOUR NEW TECHNO TOY TUNING
BRAKE KIT!***

***ANY QUESTIONS PLEASE EMAIL US
AT INFO@TECHNOTOYTUNING.COM***