

# ***TECHNO TOY TUNING***

## ***510 WAGON MICRO REAR BIG BRAKE KIT***

### ***PACKING LIST:***

- 2) Wilwood Calipers
- 2) Caliper Brackets
- 2) Wagon Adapter Bracket
- 2) Rotors
- 2) Stainless Brake Lines
- 1) Box Wilwood Brake Pads
- 1) Hardware Kit

### ***HARDWARE LIST:***

- Qty 2) 90 Degree Brake Line Elbows
- Qty 8) 10-1.25x30 Bolts and Lock Washers (Bracket to Flange)
- Qty 4) 3/8-24x2 Socket Head bolts (Caliper to Bracket)
- Qty 4) Half Moon Shims
- Qty 2) Rotor Alignment Ring

Once you have completely removed drum brake assembly you are ready to proceed installing the brake kit.

Bare axle flange shown below:





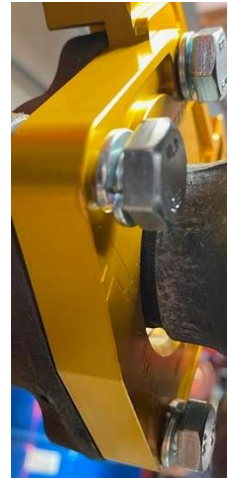
Place half moon shims into wagon adapter bracket and place onto axle flange with half moon shims placed against bearing face.



Use extension to go through the holes provided on the flange to tighten down the four 10-1.25x30 bolts to the bracket.



Connect second half of bracket and bolt it all up.  
(photos of how it should look displayed below)



Bracket should now be bolted together and fully seated against the Bearing face. (Torque the four 10-1.25x30 bolts to 45ft.lb)



Place rotor alignment ring into rotor as shown below.



Place caliper onto bracket using the four 3/8-24x2 socket head bolts.

(3/8-24x2 bolts should be torqued down to 30ft.lb)

Remove the pad retainer from the caliper, install the pads and re-install retainer. Install elbow fittings into the caliper (2-3 turns past hand tight), install brake lines and orient correctly so they do not rub or get pinched.

Repeat procedure on opposite side and bleed brakes. Clean well and double check for firm pedal and no leaks. Install wheels and you are ready to go!



***WE HOPE YOU ENJOY THE  
PERFORMANCE AND AESTHETICS OF  
YOUR NEW TECHNO TOY TUNING  
BRAKE KIT!***

***ANY QUESTIONS PLEASE EMAIL US  
AT [INFO@TECHNOTOYTUNING.COM](mailto:INFO@TECHNOTOYTUNING.COM)***